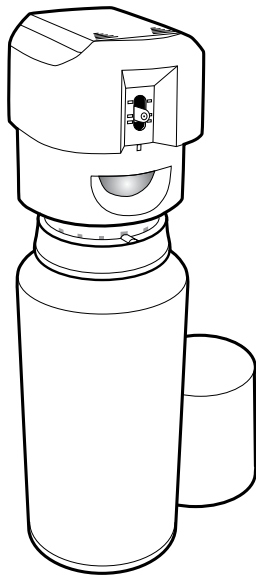




protect. teach. love.®

Operating Guide

PDT00-13914
SSSCAT®



Please read this entire guide before beginning

Thank you for choosing PetSafe® Brand. You and your pet deserve a companionship that includes memorable moments and a shared understanding. Our products provide you with the tools and technologies to successfully train your pet. If you have any questions about our products or training your pet, please visit our website at www.petsafe.net or contact our Customer Care Center at 1-800-732-2677. To get the most protection out of your warranty, please register your product within 30 days at www.petsafe.net. By registering and keeping your receipt, you will enjoy the product's full warranty and should you ever need to call the Customer Care Center, we will be able to help you faster. Most importantly, we will never give or sell your valuable information to anyone. Complete warranty information is available online at www.petsafe.net.

Hereinafter Radio Systems Corporation, Radio Systems PetSafe Europe Ltd., Radio Systems Australia Pty Ltd. and any other affiliate or brand of Radio Systems Corporation may be referred to collectively as "We" or "Us."

Important Safety Information

Explanation of attention words and symbols used in this guide



This is the safety alert symbol. It is used to alert you to potential personal injury hazards. Obey all safety messages that follow this symbol to avoid possible injury or death.

⚠ WARNING

WARNING indicates a hazardous situation which, if not avoided, could result in death or serious injury.

⚠ CAUTION

CAUTION, used with the safety alert symbol, indicates a hazardous situation which, if not avoided, could result in minor or moderate injury.

⚠ WARNING

Not for use with aggressive dogs. Do not use this product if your dog is prone to aggressive behavior. Aggressive dogs can cause severe injury or death to their owners and others. If you are not sure that this product is right for your dog, please talk to your veterinarian or a certified trainer.

⚠ CAUTION

Do not expose the device to freezing temperatures (-32°F or 0°C) or to conditions warmer than 113°F or 45°C. Do not leave the unit in direct sunlight. Never leave the unit in a car where the device can heat up to high temperatures (113°F or 45°C).

Aerosols:

- Keep out of reach of children.
- The contents of the aerosol can are under pressure.
- Use only in a well ventilated area. Use only as directed.
- Do not burn. Do not dispose of in a fire, even when empty.
- Keep out of direct sunlight.
- Store in a cool location.
- Keep away from sparks or flame. Do not smoke when attaching the motion detector unit to the aerosol can.
- Do not puncture. Contact of the liquid propellant with the skin may cause frostbite.
- Do not ingest. In case of an accident, seek medical care. If swallowed, call a poison control center immediately.
- For indoor use only.

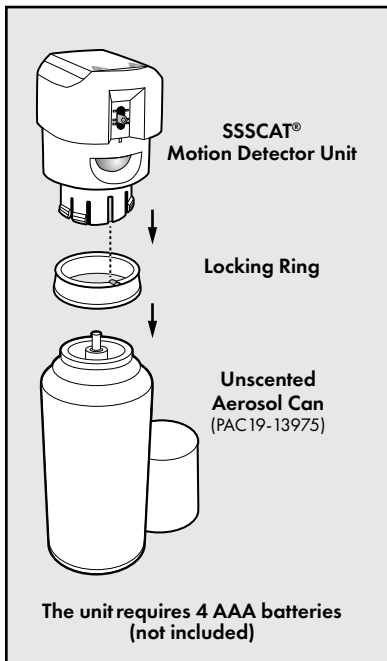
The PetSafe® SSSCAT® unit must be used only on healthy pets. We recommend that you take your pet to a veterinarian before using the unit if he is not in good health.

The PetSafe® SSSCAT unit is not a toy. Keep it away from the reach of children. Use it only for its pet-avoidance purpose.

Table of Contents

Components	5
Features.....	5
How the Spray Deterrent Works.....	5
Key Definitions	6
Getting Started	7
Insert the Batteries.....	7
Lock the Unit	7
Adjust the Direction.....	7
Test the SSSCAT® Unit	8
Choose a Location	8
Care and Cleaning	8
Frequently Asked Questions	9
Troubleshooting	9
Battery Disposal	11
FCC.....	11

Components



Features

- Motion detection range up to 3 ft.
- Adjustable direction of spray (3 vertical settings)
- Adjustable motion sensor (5 horizontal settings)
- Safe and effective, unscented spray
- On (I)/Off (O) switch
- 80–100 sprays between refills

Prevent your pet from:

- Entering a room.
- Jumping on furniture.
- Counter surfing.
- Tipping over garbage cans.

How the Spray Deterrent Works

The PetSafe® SSSCAT unit uses infrared to monitor movement up to 3 ft. away. It detects movement through changes in temperature and sends a quick, safe spray to startle your pet. Your pet quickly learns to avoid areas that are off-limits. The spray is odorless and safe; however, it is a sufficient stimulus to deter pets from jumping on countertops, digging in trash or entering restricted areas. It is effective for both cats and dogs of all sizes and

breeds. The SSSCAT® unit works by sensing differences in temperatures. It may not work properly if it is placed too close to a heat source (dishwasher, heating vent), or if your long-haired pet is very cold. For best results, the unit should be placed in an area where the temperature is between 60°F and 80°F. As a reference, a cat's normal body temperature is about 103°F and a dog's normal body temperature is about 102°F.

Key Definitions

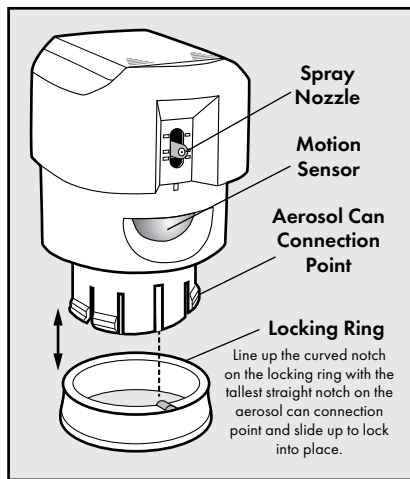
Battery Door: Holds 4 AAA batteries (not included)

Spray Nozzle: Emits the spray up to 39 in. from the unit. The nozzle can be adjusted to 3 vertical positions.

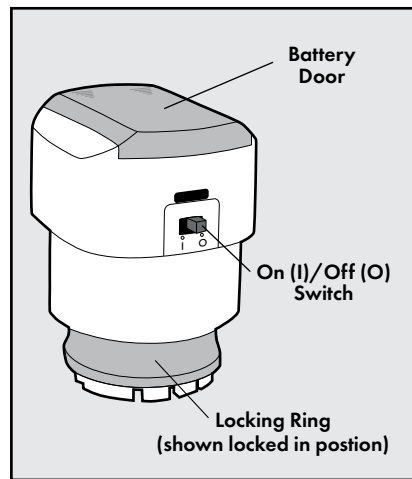
Motion Sensor: Monitors any temperature-dependent movement up to 3 ft. away. The sensor can be adjusted to 5 horizontal settings.

Locking Ring: Locks the motion detector unit securely to the aerosol can.

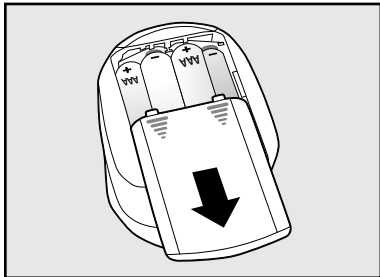
Motion Detector Unit—Front



Motion Detector Unit—Back



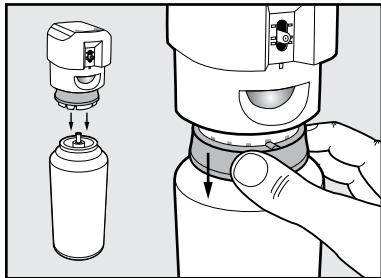
Getting Started



Insert the Batteries

- Slide open the battery door on the top of the motion detector unit.
- Insert 4 AAA batteries (not included).
- Replace the battery door.

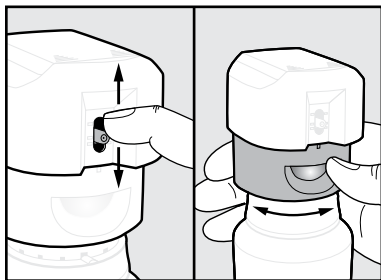
Note: Average battery life is 2–3 months, depending on how often the unit activates.



Lock the Unit

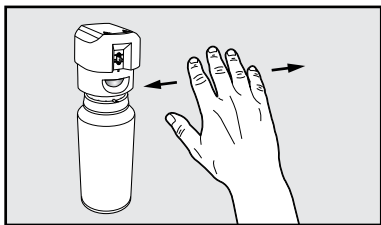
- With the switch set to off (“O” position), place the motion detector unit on top of the spray can and firmly pull down the locking ring until it clicks in place. To detach the motion detector unit, push the locking ring up and pull the unit off the spray can.

Note: The spray can may dispense whenever you attach or remove the motion detector unit.



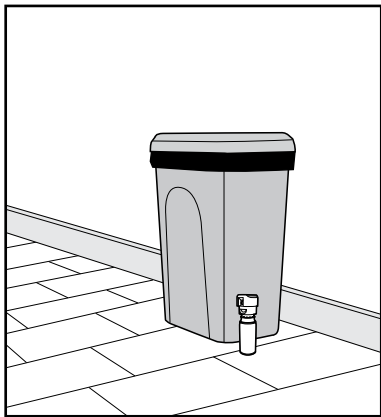
Adjust the Direction

- To avoid a direct spray to your pet's face, adjust the vertical direction of the spray to one of 3 positions by pushing the nozzle up or down.
- Adjust the horizontal direction of the motion sensor to one of 5 positions by turning it to the right or left.



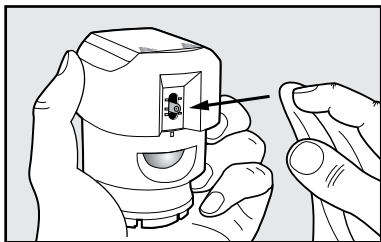
Test the SSSCAT® Unit

- Turn the SSSCAT unit on by sliding the switch to the left ("I" position), and wait about 2 minutes for it to normalize.
- You can test it by waving your hand from side to side in front of it.



Choose a Location

- Place the SSSCAT unit near an area that you would like your pet to avoid, such as a trash can or a doorway.
- Choose a location where the temperature is between 60°F and 80°F.
- To prevent false activations, do not place the unit in direct sunlight or in close proximity to HVAC vents.
- To prevent false activations, do not point the sensor toward a wall or an object that is in direct sunlight or in close proximity to HVAC vents.
- Position the unit for the pet to pass the sensor instead of walking directly towards it.
- The spray range is about 39 in. from the unit.



Care and Cleaning

- Turn the unit off by sliding the switch to the right ("O" position) before cleaning it.
- Use a cloth with warm, soapy water to clean the nozzle monthly.
- Do not submerge the unit under water.

Frequently Asked Questions

Will the SSSCAT® unit work for my dogs and cats?	<ul style="list-style-type: none">• The unit is safe and effective for dogs and cats of all breeds and sizes.
Is the spray safe for my pets?	<ul style="list-style-type: none">• While the spray is unpleasant, it is harmless to your pets.

Troubleshooting

The SSSCAT unit does not spray.	<ul style="list-style-type: none">• Ensure that the batteries are properly installed.• Replace the batteries.• Clean the spray nozzle.• Replace the unscented aerosol can.• Ensure that the motion detector unit is securely seated onto the unscented aerosol can and that the locking ring is in the locked position.• Place the unit in a room where the temperature is between 60°F and 80°F and not in direct sunlight or near a heat source.• If the unit still does not respond, contact the Customer Care Center.
The spray nozzle has a build-up around the nozzle.	<ul style="list-style-type: none">• Gently clean around the spray nozzle with a warm soapy cloth.

Terms of Use and Limitation of Liability

1. Terms of Use

This product is offered to you conditioned upon your acceptance without modification of the terms, conditions and notices contained herein. Usage of this product implies acceptance of all such terms, conditions and notices.

2. Proper Use

This product is designed for use with pets where training is desired. The specific temperament of your pet may not work with this product. We recommend that you not use this product if your pet is aggressive. If you are unsure whether this is appropriate for your pet, please consult your veterinarian or certified trainer.

Proper use includes reviewing the entire guide provided with your product and any specific caution statements.

3. No Unlawful or Prohibited Use

This product is designed for use with pets only. This pet training device is not intended to harm, injure or provoke. Using this product in a way that is not intended could result in violation of Federal, State or local laws.

4. Limitation of Liability

In no event shall Radio Systems Corporation be liable for any direct, indirect, punitive, incidental, special or consequential damages, or any damages whatsoever arising out of or connected with the use or misuse of this product. Buyer assumes all risks and liability from the use of this product.

5. Modification of Terms and Conditions

Radio Systems Corporation reserves the right to change the terms, conditions and notices under which this product is offered.



Battery Disposal

Separate collection of spent batteries is required in many regions; check the regulations in your area before discarding spent batteries. At the end of the product life, please contact our Customer Care Center to receive instructions on proper disposal of the unit. Please do not dispose of the unit in household or municipal waste. For a listing of Customer Care Center telephone numbers in your area, visit our website at www.petsafe.net.

FCC

This device complies with part 15 of the FCC Rules. Operation is subject to the following two conditions: (1) This device may not cause harmful interference, and (2) this device must accept any interference received, including interference that may cause undesired operation.

CAUTION: Modification or changes to this equipment not expressly approved by Radio Systems Corporation may void the user's authority to operate the equipment.

Radio Systems Corporation
10427 PetSafe Way
Knoxville, TN 37932
1-800-732-2677
www.petsafe.net

For a list of patents protecting this product, please visit:
<http://www.radiosystemscorporation.com/patents>

AR400-1598/1

©2017 Radio Systems Corporation